



LEAPMOTOR



Illes Balears
Sostenibles



Govern de les
Illes Balears

BRIEFING 2025



BALEARIA





SALES & SERVICES



Illes Balears
Sostenibles



Govern de les
Illes Balears

Download the ELITECHIP APP

- CHECK YOUR BIB NUMBER
- CHECK YOUR RESULTS
- FOLLOW THE RACE TIMES ONLINE
- SHARE YOUR INRACE EXPERIENCE
- CHECK THE RACE CALENDAR
- REGISTRATION PLATFORM





SCHEDULE

SATURDAY 20TH OF SEPTEMBER

From 10:00 h to 13:00 h Bib number collection [PEUGEOT "STELLANTIS&YOU" DEALER](#) on PALMA, C/ Aragón, 191

From 17:00 h to 19:00 h [Check In](#) (**Olympic (mandatory)**) y Sprint - SuperSprint (optional)

SUNDAY 21ST OF SEPTEMBER

From 08:00 h to 09:00 h [Check In](#) (Sprint and Superprint)

08:30 h Start [swiming start line Olympic](#)

09:15 h Start [swiming start line Sprint](#)

09:30 h Start [swiming start line SuperSprint](#)

Check out at the end of the competition (until 13.00 h.)

¡IMPORTANT! *In the case there's adverse weather conditions or other factors that can affect the different races, the organization will conduct an alternativa race along with the judges.*





Illes Balears
Sostenibles



Govern de les
Illes Balears

BIB COLLECTION

SATURDAY 20TH OF SEPTEMBER

Bib collection on [PEUGEOT "STELLANTIS&YOU" DEALER](#) on PALMA, C/ Aragón, 191
from 10:00 to 13:00h.

- Runners bag: bib number, swim cap with the bib number and the evento t-shirt.
- Check your bib number using the ELITECHIP APP ([download Android](#) / [download iOS](#)) Here we explain how to do it [VIDEO](#)
[How to check your bib number](#)
- In the case of not being able to collect your bib number on the scheduled times, the organization will allow someone else to collect your bib number, always with a photo of your ID (on the mobile pone). In the case of not being able to allow someone to collect your bib number, please contact to clubmarathonmallorca@gmail.com
- It will not be allowed to collect the bib number on race day.





SALES & SERVICES



Illes Balears
Sostenibles



Govern de les
Illes Balears

BOXES

SATURDAY 20TH OF SEPTEMBER

From 17:00 h to 19:00 h [Check In](#) (Olympic (mandatory) and Sprint - SuperSprint (optional)

*During the check-in the organization will give to the triathlete their corresponding timing chip (ProChip) that will be given back by the runner at the check out.

SUNDAY 21ST OF SEPTEMBER

From 08:00 h to 09:00 h [Check In](#) (Sprint and SuperSprint)

➤ The bicycles will be numbered with CORRELATIVE numbers.

➤ Check Out until 13:00 h.

*In order to check out the bicycle, the triathlete will have to give back the timing chip. If it's not given back the triathlete will not be able to check out their bicycle.

➤ Wardrobe. Ubicacionn: WC zone (from 07:30 h.)





Illes Balears
Sostenibles



Govern de les
Illes Balears

BOXES ACCESS





LEAPMOTOR



Illes Balears
Sostenibles



Govern de les
Illes Balears

OLYMPIC TRIATHLON



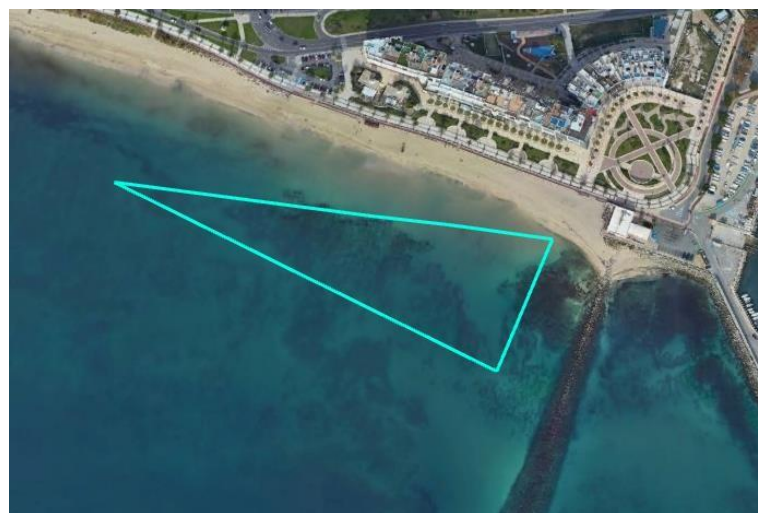
BALEARIA





SWIMMING

SWIMMING: The triathletes will do 2 laps to a 750m circuit on the Can Pere Antoni Beach. The start and the finish will be in this [zone](#), the circuit will be marked using buoys, kayaks, zodiac motorboats and sea rescue boats that will ensure the security of the triathletes.





Illes Balears
Sostenibles



Govern de les
Illes Balears

CYCLING

T1 swimming-cycling: At the end of the swimming, when entering the boxes to get the bicycle, you will have a box for you to have all your swimming gear and to get your cycling gear. After that you will be able to get your bicycle to start your 40km.

Cycling: The triathlete will do 4 laps to the 9,5km circuit plus a link sector, completing the 40km in a circuit located on the seafront walk of the Port de Palma. The circuit will be closed to traffic. The triathlete will have to follow the circulation rules, circulating all the time on the right side of the circuit.

Drafting permitted. It will not be able to use a time trial bicycle neither the use of time trial attacks.





PORT DE PALMA TRIATHLON MALLORCA



STELLANTIS & you

SALES & SERVICES



CITROËN



LEAPMOTOR



Illes Balears
Sostenibles



Govern de les
Illes Balears





PORT DE PALMA TRIATHLON MALLORCA



STELLANTIS & you

SALES & SERVICES



Illes Balears
Sostenibles



Govern de les
Illes Balears



BALEARIA





Illes Balears
Sostenibles



Govern de les
Illes Balears

RUNNING

T2 Cycling - Running: At the end of the Cycling, the triathlete will have to enter to the boxes and leave their bicycle at the same spot where you took it. The triathlete will not be able to take off their helmet until leaving the bicycle. After this you will be able to take your running shoes and start the 10km.

Running: The triathlete will do 2 laps on a 5km circuit in order to finish their 10km. There will be an aid station every 2,5km approximately. The circuit goes along all the seafront walk. In each lap you will pass through a timing chip control in order to count the laps. In order to complete the second lap you will have to deviate to the Finish Line to end the triathlon.





PORT DE PALMA TRIATHLON MALLORCA



STELLANTIS & you

SALES & SERVICES



Illes Balears
Sostenibles



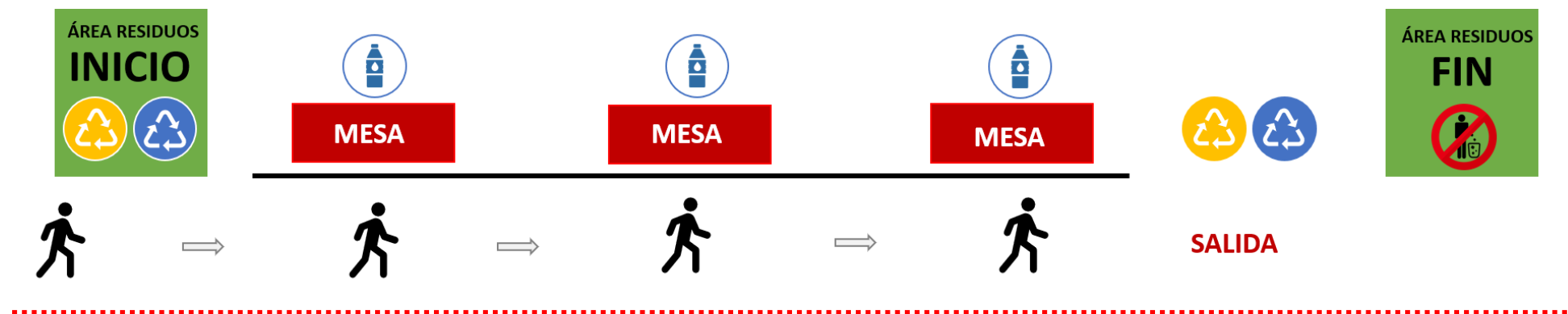
Govern de les
Illes Balears



BALEARIA



AID STATIONS



PT PORT DE PALMA TRIATHLON MALLORCA



Illes Balears
Sostenibles



Govern de les
Illes Balears

FINISH LINE





Illes Balears
Sostenibles



Govern de les
Illes Balears

FINISH LINE

- The finish line [this zone](#).
- The organization will enable a closed finish zone with a different leaving path to avoid agglomerations at the finish line.
- The aid station will be placed on a line, with a onw-way exit.

IMPORTANT: The results will be posted on the Elitechip APP ([descarga Android](#) / [descarga iOS](#)) or on the website: www.elitechip.net

More info on: www.triatlonpalma.es





Illes Balears
Sostenibles



Govern de les
Illes Balears

SPRINT TRIATHLON



BALEARIA





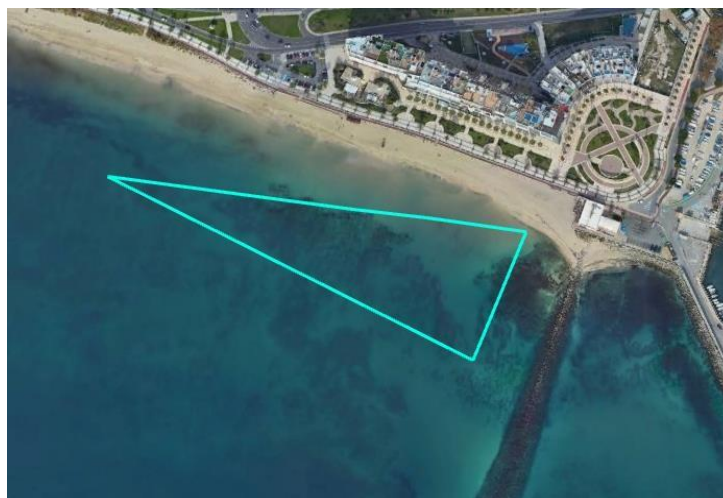
Illes Balears
Sostenibles



Govern de les
Illes Balears

SWIMMING

SWIMMING: The triathletes will do 1 lap to a 750m circuit on the Can Pere Antoni Beach. The start and the finish will be in this [zone](#), the circuit will be marked using buoys, kayaks, zodiac motorboats and sea rescue boats that will ensure the security of the triathletes.





LEAPMOTOR



Illes Balears
Sostenibles



Govern de les
Illes Balears

CYCLING

T1 swimming-cycling: At the end of the swimming, when entering the boxes to get the bicycle, you will have a box for you to have all your swimming gear and to get your cycling gear. After that you will be able to get your bicycle to start your 20km.

Cycling: The triathlete will do 2 laps to the 9,5km circuit plus a link sector, completing the 20km in a circuit located on the seafront walk of the Port de Palma. The circuit will be closed to traffic. The triathlete will have to follow the circulation rules, circulating all the time on the right side of the circuit.

Drafting permitted. It will not be able to use a timetrial bicycle neither the use of timetrial attachs.



BALEARIA





PT PORT DE PALMA TRIATHLON MALLORCA



STELLANTIS & you

SALES & SERVICES



CITROËN



LEAPMOTOR



Illes Balears
Sostenibles



Govern de les
Illes Balears



BALEARIA





PORT DE PALMA TRIATHLON MALLORCA



STELLANTIS & you

SALES & SERVICES



Illes Balears
Sostenibles



Govern de les
Illes Balears



BALEARIA





Illes Balears
Sostenibles



Govern de les
Illes Balears

RUNNING

T2 Cycling - Running: At the end of the Cycling, the triathlete will have to enter to the boxes and leave their bicycle at the same spot where you took it. The triathlete will not be able to take off their helmet until leaving the bicycle. After this you will be able to take your running shoes and start the 5km.

Running: The triathlete will do 1 lap on a 5km circuit in order to finish their 5km. There will be an aid station every 2,5km approximately. The circuit goes along all the seafront walk. In each lap you will pass through a timing chip control in order to count the laps. In order to complete the second lap you will have to deviate to the Finish Line to end the triathlon.





PORT DE PALMA TRIATHLON MALLORCA



STELLANTIS & you

SALES & SERVICES



Illes Balears
Sostenibles



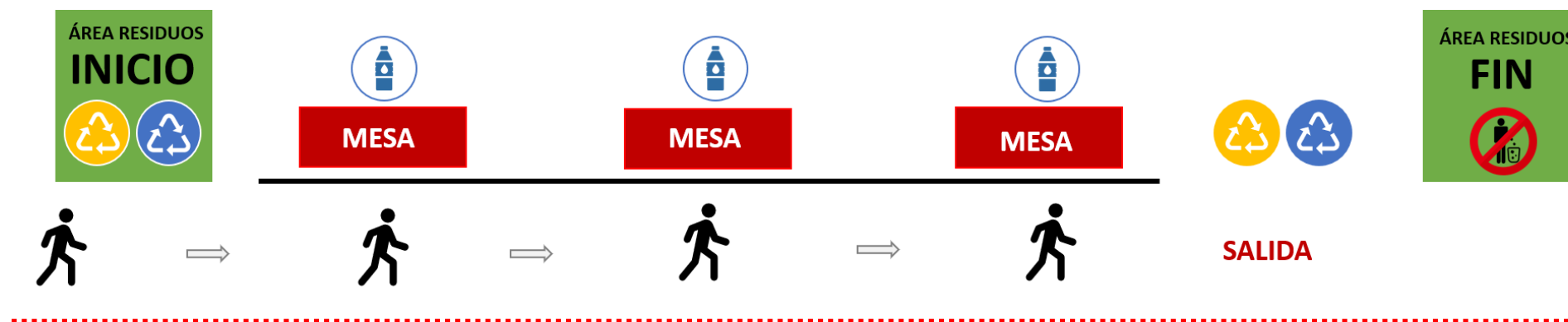
Govern de les
Illes Balears



BALEARIA



AID STATIONS





LEAPMOTOR



Illes Balears
Sostenibles



Govern de les
Illes Balears

FINISH LINE

- The finish line [this zone](#).
- The organization will enable a closed finish zone with a different leaving path to avoid agglomerations at the finish line.
- The aid station will be placed on a line, with a onw-way exit.

IMPORTANT: The results will be posted on the Elitechip APP ([descarga Android](#) / [descarga iOS](#)) or on the website: www.elitechip.net

More info on: www.triatlonpalma.es



BALEARIA



PT PORT DE PALMA TRIATHLON MALLORCA



Illes Balears
Sostenibles



Govern de les
Illes Balears

FINISH LINE





Illes Balears
Sostenibles



Govern de les
Illes Balears

SUPERSPRINT TRIATHLON





LEAPMOTOR



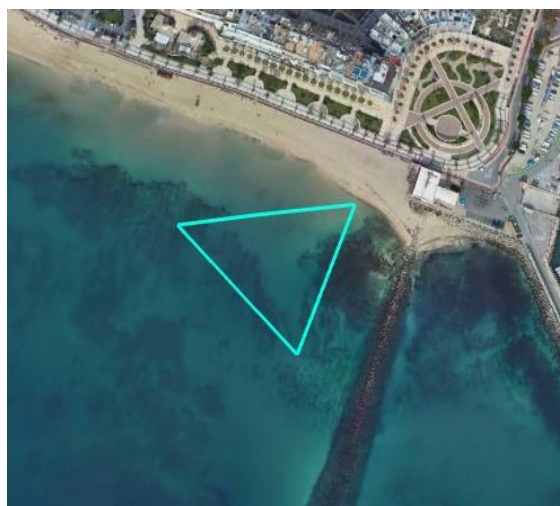
Illes Balears
Sostenibles



Govern de les
Illes Balears

SWIMMING

SWIMMING: The triathletes will do 1 lap to a 350m circuit on the Can Pere Antoni Beach. The start and the finish will be in this [zone](#), the circuit will be marked using buoys, kayaks, zodiac motorboats and sea rescue boats that will ensure the security of the triathletes.





LEAPMOTOR



Illes Balears
Sostenibles



Govern de les
Illes Balears

CYCLING

T1 swimming-cycling: At the end of the swimming, when entering the boxes to get the bicycle, you will have a box for you to have all your swimming gear and to get your cycling gear. After that you will be able to get your bicycle to start your 13km.

Cycling: The triathlete will do 1 lap to the 9,5km circuit plus a link sector, completing the 13km in a circuit located on the seafront walk of the Port de Palma. The circuit will be closed to traffic. The triathlete will have to follow the circulation rules, circulating all the time on the right side of the circuit.

Drafting permitted. It will not be able to use a timetrial bicycle neither the use of timetrial attachs.





PORT DE PALMA TRIATHLON MALLORCA



STELLANTIS & you

SALES & SERVICES



Illes Balears
Sostenibles



Govern de les
Illes Balears



BALEARIA





Illes Balears
Sostenibles



Govern de les
Illes Balears

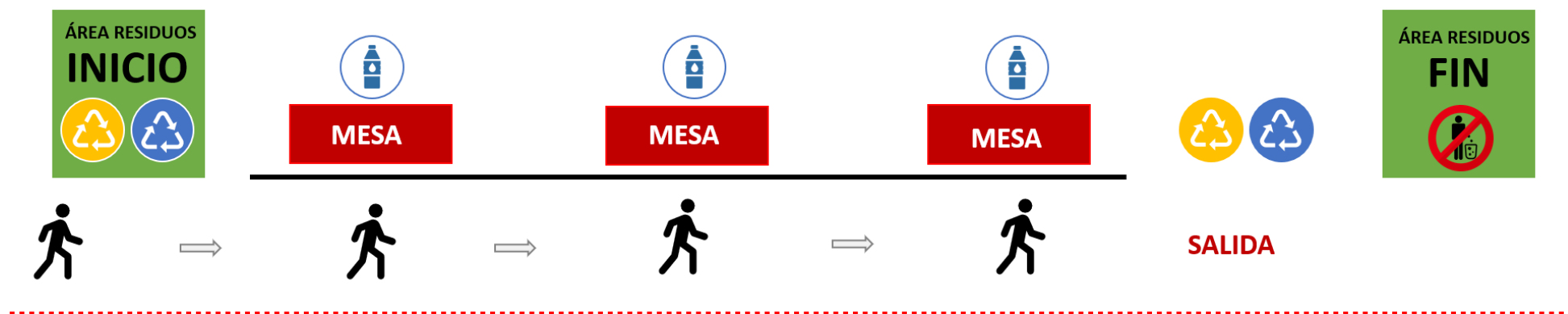
RUNNING

T2 Cycling - Running: At the end of the Cycling, the triathlete will have to enter to the boxes and leave their bicycle at the same spot where you took it. The triathlete will not be able to take off their helmet until leaving the bicycle. After this you will be able to take your running shoes and start the 2,5km.

Running: The triathlete will do 1 lap on a 2,5km circuit in order to finish their 2,5km. There will be an aid station every 2,5km approximately. The circuit goes along all the seafront walk. In each lap you will pass through a timing chip control in order to count the laps. In order to complete the second lap you will have to deviate to the Finish Line to end the triathlon.



AID STATIONS





PORT DE PALMA TRIATHLON MALLORCA



STELLANTIS & you

SALES & SERVICES



Illes Balears
Sostenibles



Govern de les
Illes Balears



BALEARIA





FINISH LINE

- The finish line [this zone](#).
- The organization will enable a closed finish zone with a different leaving path to avoid agglomerations at the finish line.
- The aid station will be placed on a line, with a onw-way exit.

IMPORTANT: The results will be posted on the Elitechip APP ([descarga Android](#) / [descarga iOS](#)) or on the website: www.elitechip.net

More info on: www.triatlonpalma.es



PT PORT DE PALMA TRIATHLON MALLORCA



STELLANTIS & you

SALES & SERVICES



Illes Balears
Sostenibles



Govern de les
Illes Balears

FINISH LINE



BALEARIA





LEAPMOTOR



Illes Balears
Sostenibles



Govern de les
Illes Balears

¡SEE YOU ON THE FINISH LINE!



BALEARIA

